



Elephant Robotics

SMALL BODY, BIG DREAM!

Shenzhen Headquater

Email [Sales] sales@elephantrobotics.com
[Marketing] marketing@elephantrobotics.com
[Customer Service] service@elephantrobotics.com

Address R208, B7, Yungu Innovative Industrial Park 2,
Nanshan, Shenzhen, China 518057

Tel (86) 755 8696-8565

Website www.elephantrobotics.com

Catbot

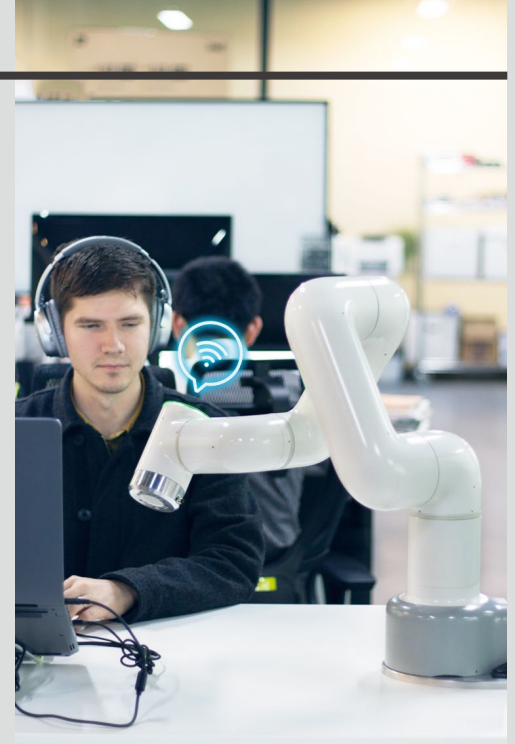


Catbot

Compact and Smart

Catbot is the latest six-axis collaborative robot produced by Elephant Robotics. For the first time, it solves the occupation of robot control cabinet and integrates the control cabinet into the robot arm body, realizing the integrated cabinet. It has a modular design and a compact fuselage with a weight of only 15kg.

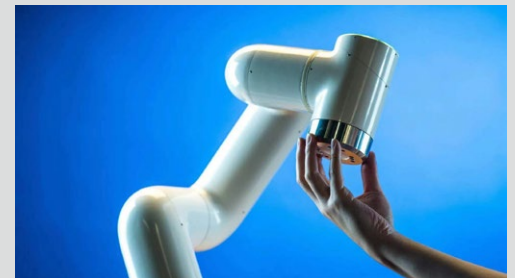
The integrated cabinet greatly reduces the floor area of Catbot and effectively simplifies the installation process of the robot.



Voice Control

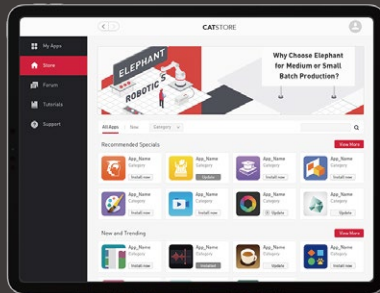
Catbot has the new function of human-computer voice interaction to make voice programming a reality. Users can use voice to control Catbot to do precise action to millimeters. Man-computer voice interaction function makes robot programming more convenient.

Catbot's operating system is easy to operate and the interface is simple and clear. Even a novice can quickly learn how to program.



Catbot

Open and Compatible



CatStore & Open-Platform

Catbot is equipped with a skill shop with nearly pre-set 20 basic skills. It also supports users to develop more programs independently and share them with other users.

Catbot robot is an open software platform that enables users to redevelop the robot on their own or by using a third party.

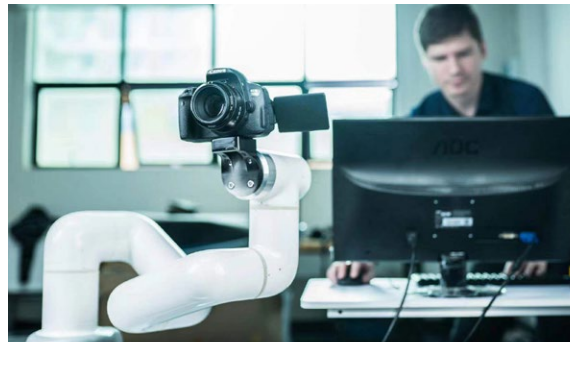
The openness of Catbot makes it easy to expand and realizes multiple functions, which has a wide range of application scenarios.



Leisure



Entertainment



Education



Catbot's cloud programming function allows anyone with an innovative idea to program a robot by using a terminal device or computer whenever and wherever possible, and the robot will realize the innovative idea.

Catbot

Cost Effective



Modular design

Catbot robot is adopted with modular design with few spare parts and low maintenance cost. At the same time, Catbot end effector is also adopted with modular design, and users can quickly replace it according to work requirements. Its modular design can also greatly shorten the installation and commissioning time of the robot and realize plug and play.

Wide range of application

Catbot can not only adapt to the structured production workshop, but also meet the installation needs of non-institutional shops or studios.

Catbot collaborative robot can not only work with workers, but also appear as an independent automation unit in industrial production automation upgrading and transformation.

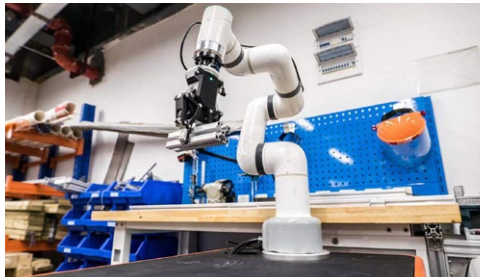


Catbot

“1+1>2”



As a collaborative robot, Catbot is equipped with torque measurement function. When the slight collision is perceived, the emergency stop is started to ensure the safety of personnel. No need to install a protective barrier.



Equipped with other intelligent equipment, the intelligent and flexible Catbot, becomes an intelligent assistant. Whether used in the process of mass production or as an intelligent assistant in a studio, Catbot can take you to the intelligent world.

Catbot can realize voice interaction function. It can work with people and become a real robot assistant for users.



ElephantRobotics

Shenzhen Elephant Robotics Technology Co., Ltd. was founded in 2016, which is committed to providing highly flexible collaborative robots, ElephantOS operating system and customized intelligent automation solutions for industries such as industrial production, robot education and training, and scientific research tests.

The products developed by elephant-robot are widely used in industrial production, commercial use and civil use



Catbot Technical Specifications

ROBOT

Robot version	Catbot
Payload	3kg
Reach	600mm
Degrees of freedom	6
Working range	J1: ±360° , J2: ±180° , J3: ±165° , J4/J5/J6: ±360°
Axis maximum speed	J1/J2/J3: 180°/sec J4/J5/J6: 225°/sec
Tool Speed	1m/sec
Weight	18kg
Position repeatability	±0.05mm
Dimensions robot base	Φ150mm
I/O ports	Digital Input: 12 Digital Output: 8
Tool I/Oports	Digital Input: 3 Digital Output: 3
I/O power supply	24V 2A
Communication	TCP/IP
Programming mode	Graphical programming
IP classification	IP42
Power consumption	180W
Materials	Aluminium alloy, PC, Rubber
Operating temperature range	0-50 C
Power supply	DC 48V, 10.5A DC 24V, 4.5A
Collaboration operation	Test in accordance with: EN ISO 13848:2008 PL d EN ISO 10218-1: 2011-Clause 5.4.3
Noise	<70dB
Robot mounting	Any angle
Relative humidity	5%-95%
Interface and openness	SDK(Python, C++,JAVA),API,ROS

TEACH PENDANT (OPTIONAL)

Size (L×W×H)	255mm×230mm×90mm
Weight	1.8kg
Screen resolution	1024mm×768mm
IP classification	IP20
Screen size	10.4"

POWER BOX (OPTIONAL)

Size (L×W×H)	297mm×200mm×128mm
Weight	6kg
Power supply	AC 220V, 50Hz
IP Rate	IP20

Catbot Product Advantages



All-in-one



Plug and Play



Easy Set-Up



Safety



Modular
Accessories



High
Efficiency



Human-Machine
Interaction



Cost
Efficient